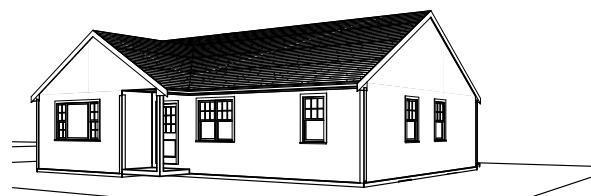
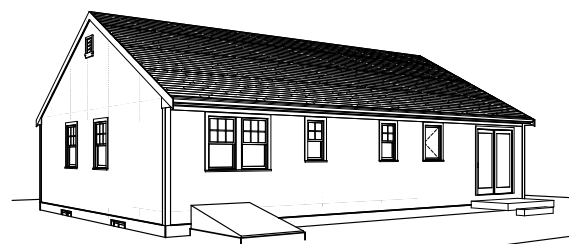
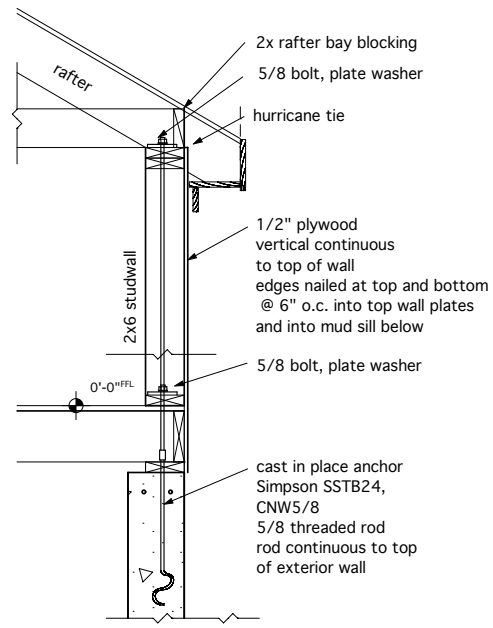
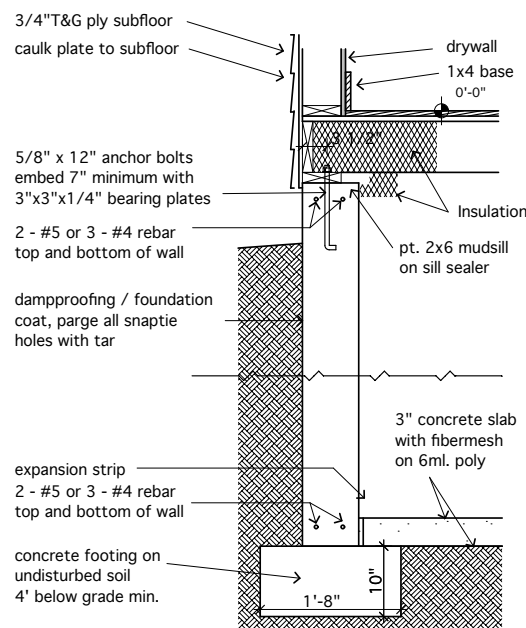


Basement Window Schedule						
Qty	ID	Manufacturer	Serial Number	Width	Height	Note/Remarks
4	U	FormTech	basement	2'-8"	1'-8"	low-E R-4 Energy Star cast in concrete



Notes:

All construction shall conform to Massachusetts State Building Code. Plans based on WFCM, exposure B, 110 mph wind speed. Ground snow load 30 psf, FFL live load 40 psf, SFL live load 30 psf.

Install all items to manufacturer's recommendations unless noted otherwise. Provide Allowances for all unspecified items. Story pole approval required before shingling, see note.

Solar panels not in contract. Install 3/4" EMT conduit from basement to attic for future panel wiring, no roof penetration. Roof penetration is typically in upper left corner.

Wood flooring: 2 1/4" strips red oak

Submit cabinet drawings for approval.

Drawing List	
A-1	Floor Plans
A-2	Elevations
A-3	Framing Plans

ARCHITECT

William F. Roslansky

copyright William F. Roslansky
26 Albatross Street, Woods Hole, Massachusetts, 02543
(508) 540-8950

Floor Plans
FHT Ranch
St. Marks Rd., Falmouth, MA

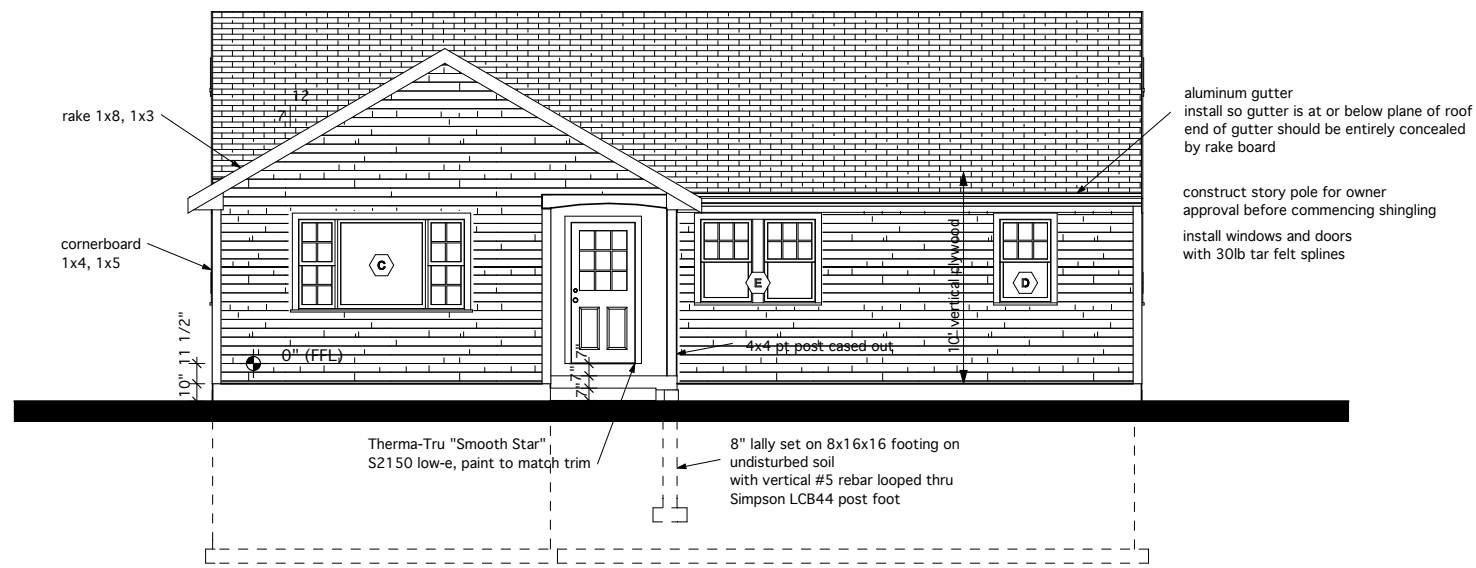
Date: 6/28/2013
Rev. Date & Type:

Scale: 1/4" = 1'-0"

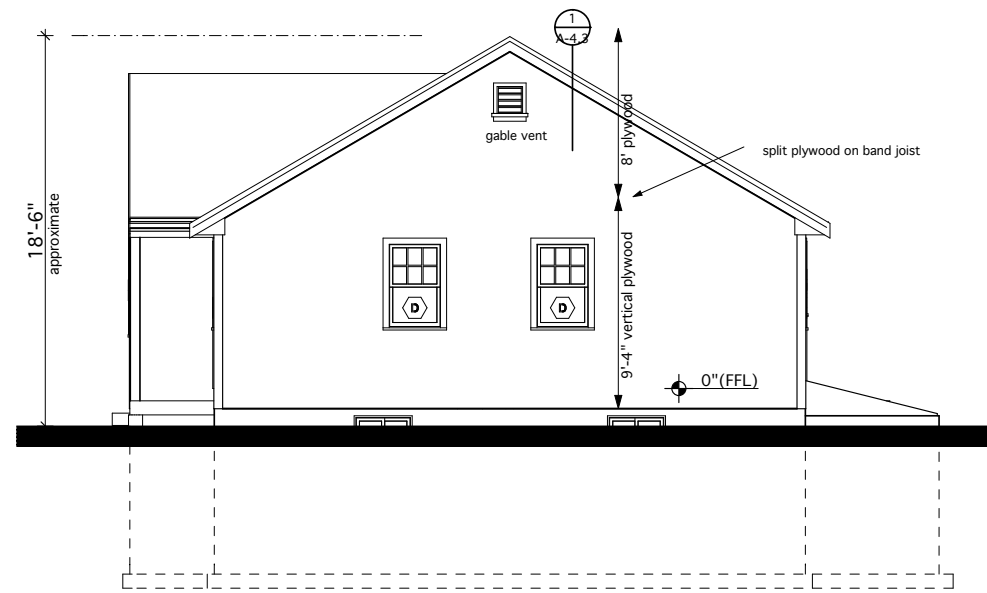
Sheet No.

A-1

FHT Ranch



2 Front Elevation (North)
SCALE: 1/4" = 1'-0"



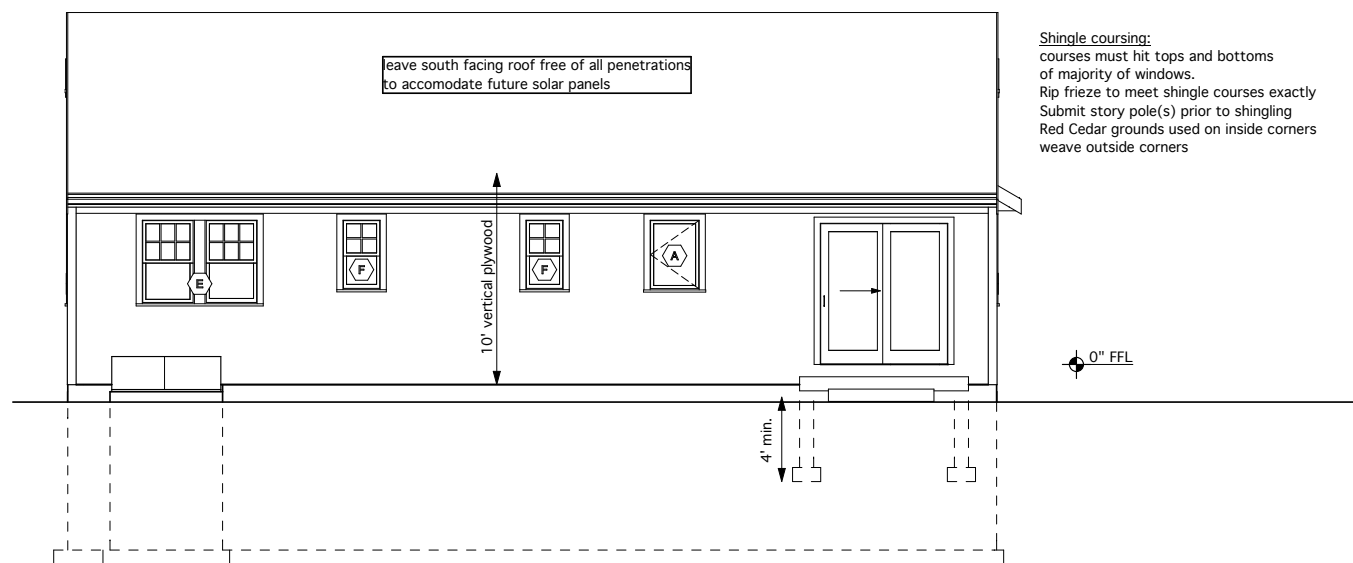
1 Right Elevation
SCALE: 1/4" = 1'-0"

Window Schedule						
Qty	ID	Manufacturer	Serial Number	Width	Height	Note/Remarks
1	A	Andersen	CW135	2'-4 7/8"	3'-5 3/8"	200 series
1	B	Andersen 200	3 of 24310	8'-6 3/8"	4'-1 1/4"	double hung install separately
1	C	Andersen	NL1842-DHP4242-NL1842	7'-11 3/8"	4'-5 1/4"	200 series
5	D	Andersen 200	24310	2'-6 1/8"	4'-1 1/4"	double hung
2	E	Andersen 200	2 of 24310	5'-6 1/4"	4'-1 1/4"	double hung install separately
2	F	Andersen 200	1832	1'-10 1/8"	3'-5 1/4"	double hung
4	U	FormTech	basement	2'-8"	1'-8"	low-E R-4 Energy Star cast in concrete

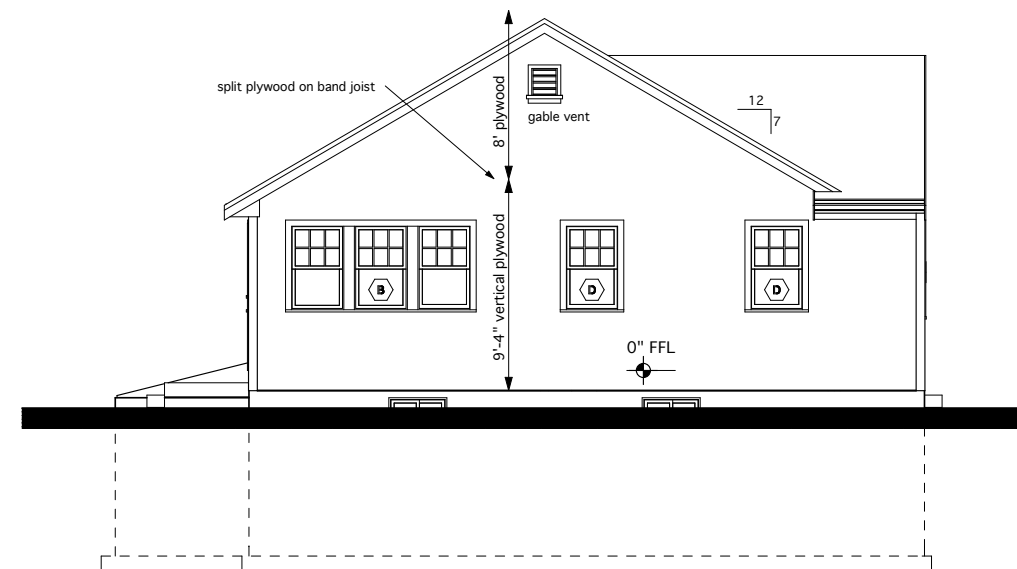
verify door and window sizes with plans, verify quantities and finishes before ordering
install following manufacturer's recommendations unless noted otherwise
exterior door and window color: white

Door Schedule							
Qty	ID	Manufacturer	Serial Number	Rough Opening	Width	Height	Notes / Remarks
1	1	Therma-Tru	S210	3-2 1/2 x 6-10 1/2	3'	6'-8"	
1	2	Andersen 200	PS61611	6-0 3/4 x 6-11	6'	6'-8"	slider
1	5				2'	6'-8"	interior door, MDF molded typical
9	5				2'-6"	6'-8"	interior door, MDF molded typical
1	7				4'-8"	6'-8"	interior door, MDF molded, bypassing
1	7				5'	6'-8"	interior door, MDF molded, bypassing

typical interior door: 6 panel MDF molded doors painted white



4 Back Elevation
SCALE: 1/4" = 1'-0"



3 Left Elevation
SCALE: 1/4" = 1'-0"

Roof Construction
 2x8 rafters
 5/8" CDX plywood
 8d nails @ 6" edges, 12" field
 8d nails @ 6" @ perimeter 4' edge zone

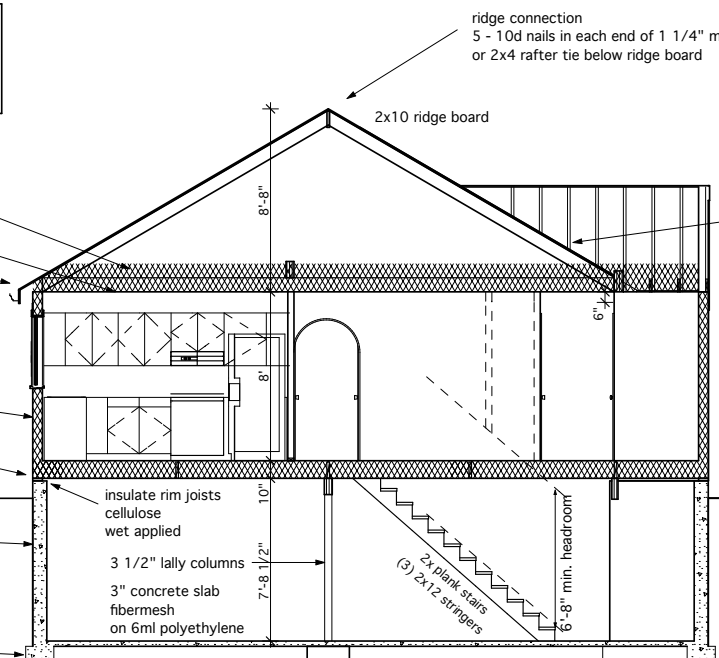
4x5 aluminium gutters and downspouts
 R-59 cellulose (3.7 x 16)
 1/2" GWB ceiling
 hurricane tie Simpson H2.5T

Wall Exterior
 2x6 stud walls
 1/2" CDX sheathing, 15lb tarfelt
 16" white cedar shingles

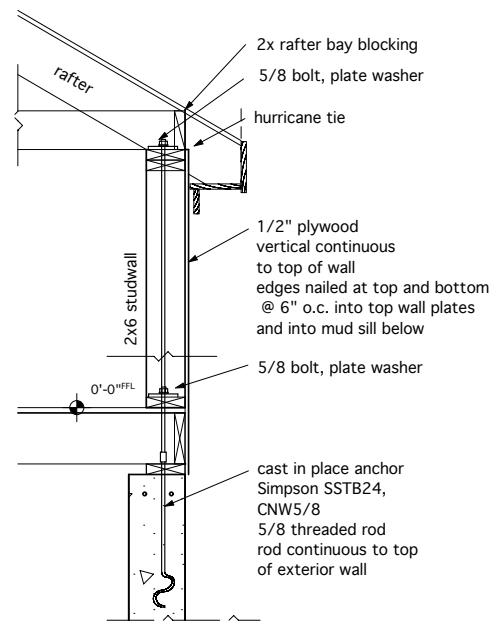
R-20 cellulose (3.7 x 5.5)
 insulate rim joists
 cellulose
 5/8" CDX plywood
 2x10 joists @ 16" oc

8" x 7'-10" concrete

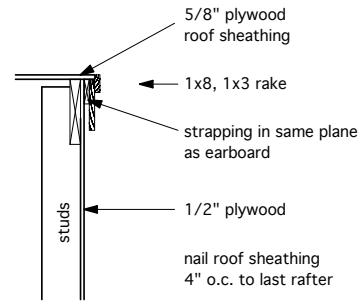
8" x 16" footing



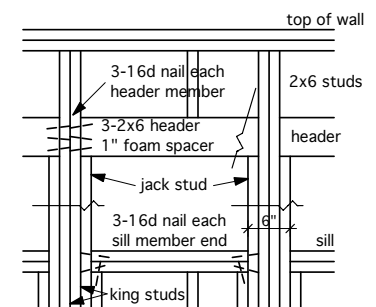
6 **A Section A**
 SCALE: 1/4" = 1'-0"



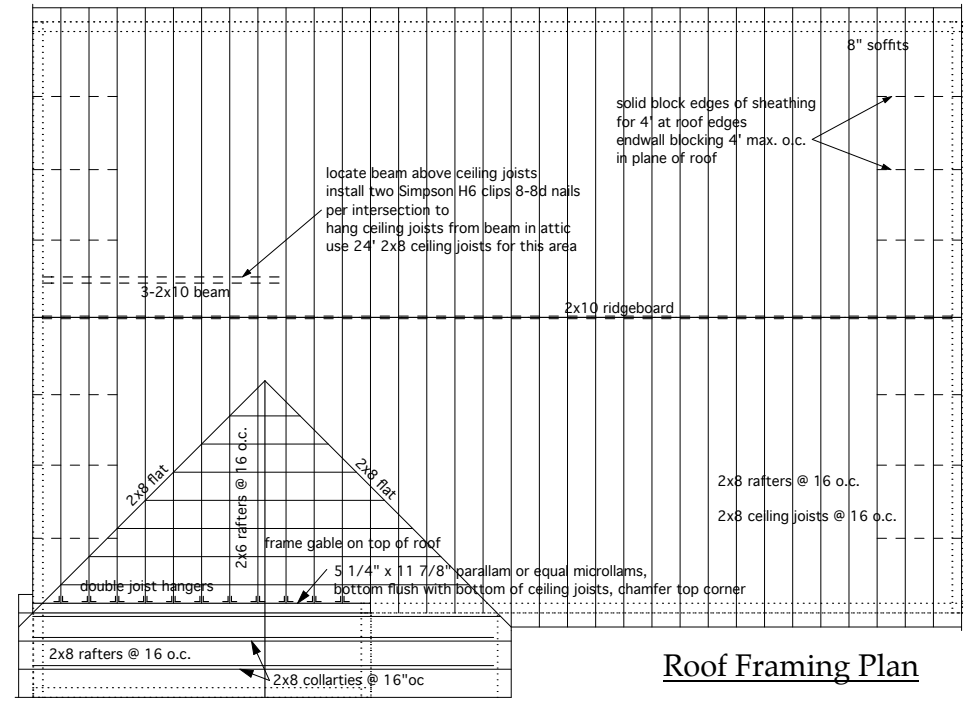
1 **5/8" HOLDDOWN**
 SCALE: 1" = 1'-0"



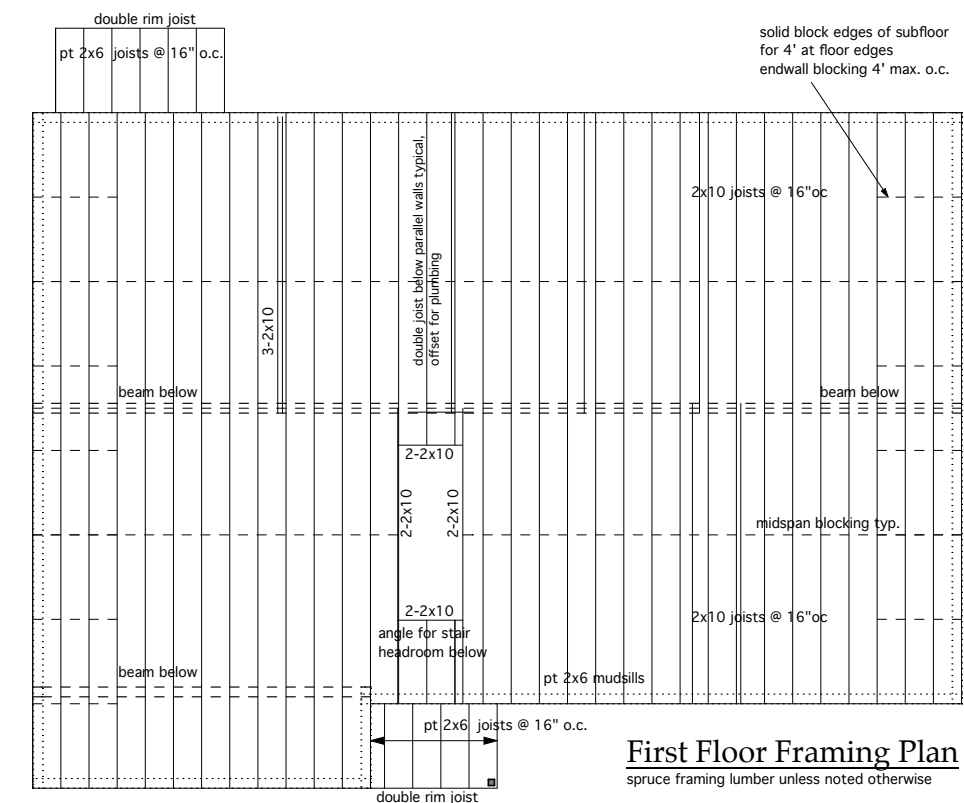
2 **RAKE**
 SCALE: 1" = 1'-0"



3 **MULTIPLE OPENINGS**
 SCALE: 1" = 1'-0"



Roof Framing Plan



First Floor Framing Plan
 spruce framing lumber unless noted otherwise