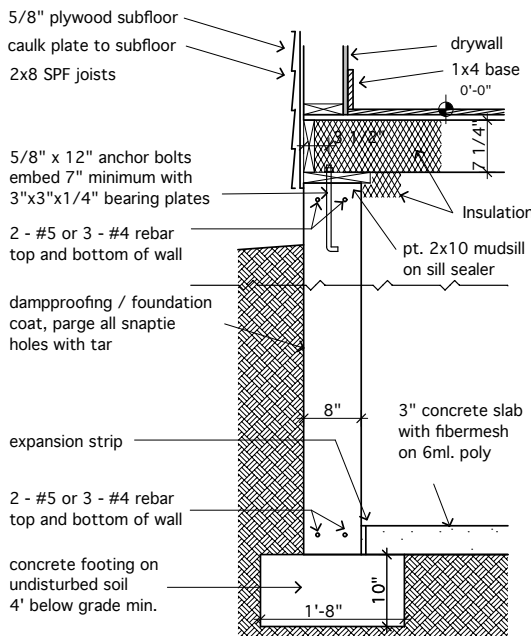
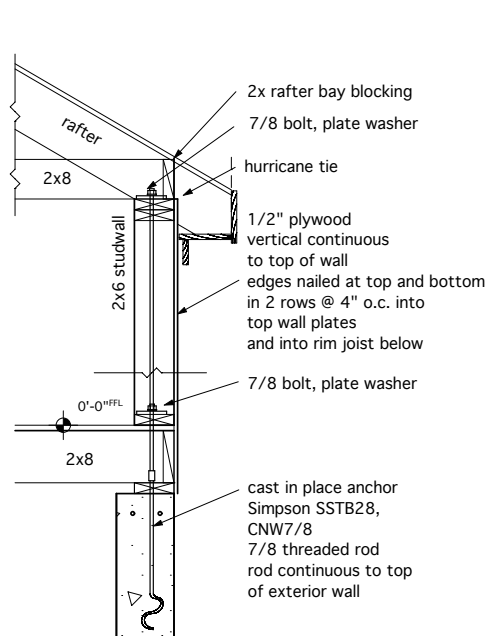


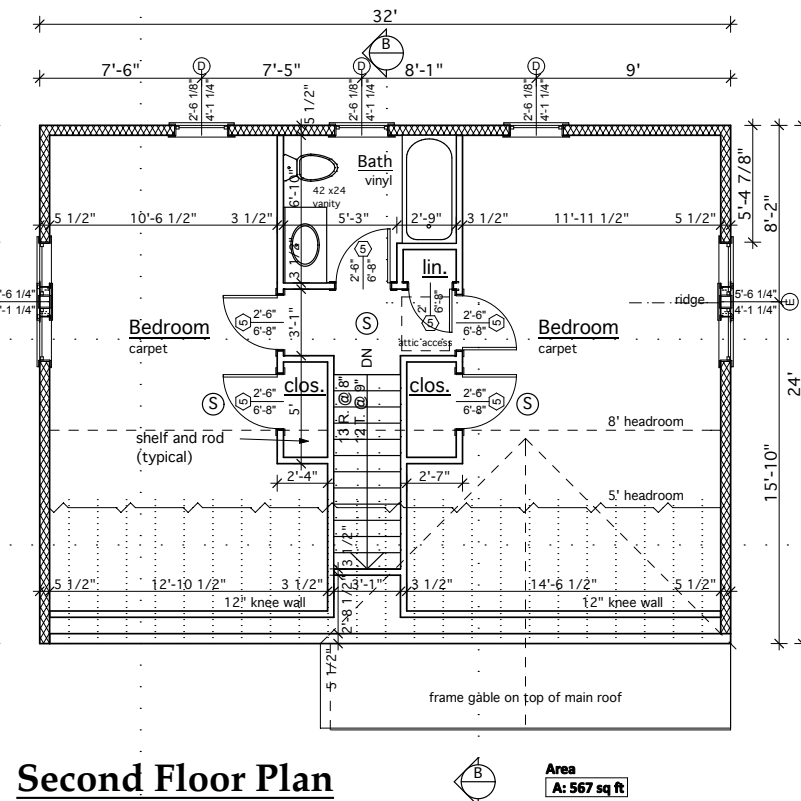
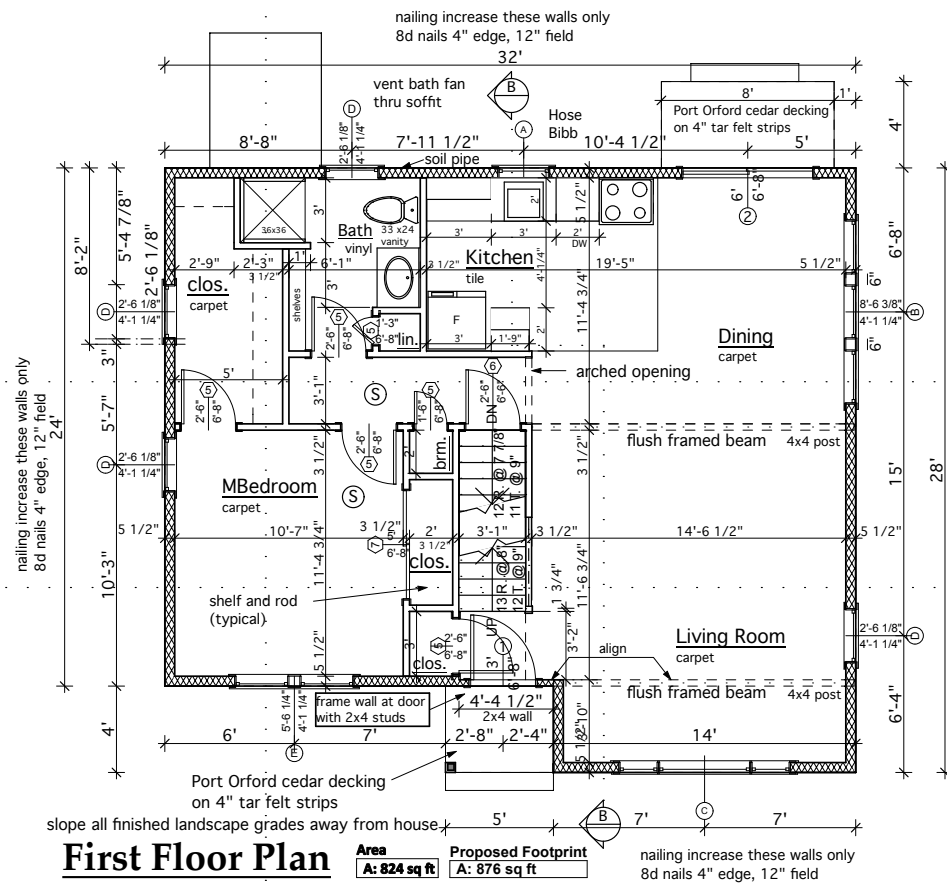
Basement Window Schedule						
Qty	ID	Manufacturer	Serial Number	Width	Height	Note/Remarks
4	U	FormTech	basement	2'-8"	1'-8"	low-E R-4 Energy Star cast in concrete



1 FOUNDATION
SCALE: 1" = 1'-0"



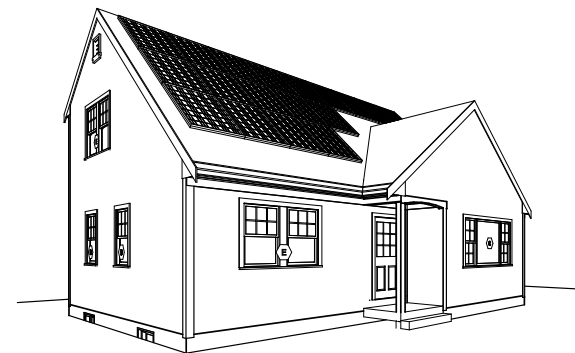
2 7/8" HOLDDOWN
SCALE: 1" = 1'-0"



Notes:
All construction shall conform to Massachusetts State Building Code. Plans based on WFCM, exposure B, 110 mph wind speed. Ground snow load 30 psf, FFL live load 40 psf, SFL live load 30 psf.
Install all items to manufacturer's recommendations unless noted otherwise. Provide Allowances for all unspecified items. Story pole approval required before shingling, see note.
Wood flooring: 2 1/4" strips red oak
Solar panels not in contract. Install 3/4" EMT conduit from basement to attic for future panel wiring, no roof penetration.
Submit cabinet drawings for approval.



6 Southeast



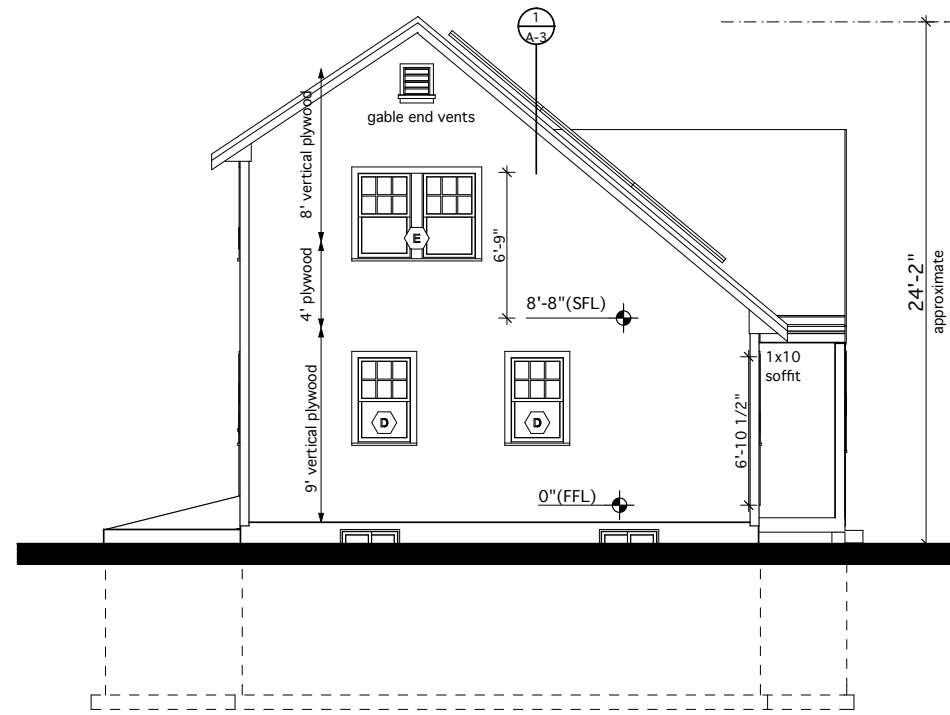
Drawing List	
A-1	Floor Plans
A-2	Elevations
A-3	Framing Plans

copyright William F. Roslansky
William F. Roslansky
26 Albatross Street, Woods Hole, Massachusetts, 02543
(508) 540-8950

Floor Plans
FHT Salt Box South Facing
St. Marks Rd., Falmouth, MA

Date: 6/28/2013
Rev. Date & Type:
Scale: 1/4" = 1'-0"

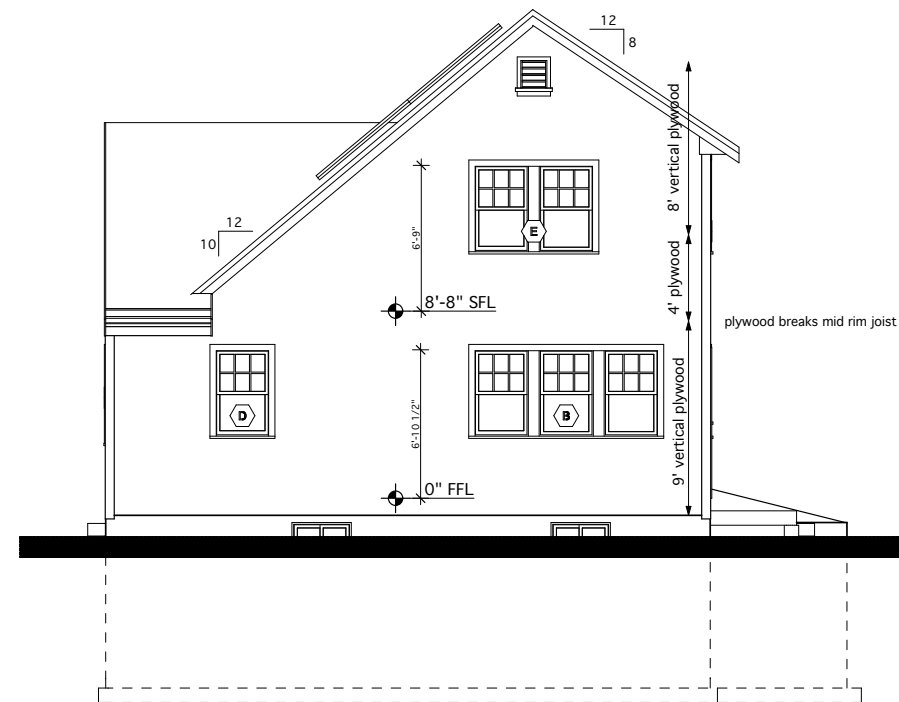
Sheet No.
A-1
FHT Salt Box SFacing



1 Left Elevation
SCALE: 1/4" = 1'-0"

Window Schedule						
Qty	ID	Manufacturer	Serial Number	Width	Height	Note/Remarks
1	A	Andersen	CW135	2'-4 7/8"	3'-5 3/8"	200 series
1	B	Andersen 200	3 of 24310	8'-6 3/8"	4'-1 1/4"	double hung install separately
1	C	Andersen	NL1842-DHP4242-NL1842	7'-11 3/8"	4'-5 1/4"	200 series
7	D	Andersen 200	24310	2'-6 1/8"	4'-1 1/4"	double hung
3	E	Andersen 200	2 of 24310	5'-6 1/4"	4'-1 1/4"	double hung install separately
4	U	FormTech	basement	2'-8"	1'-8"	low-E R-4 Energy Star cast in concrete

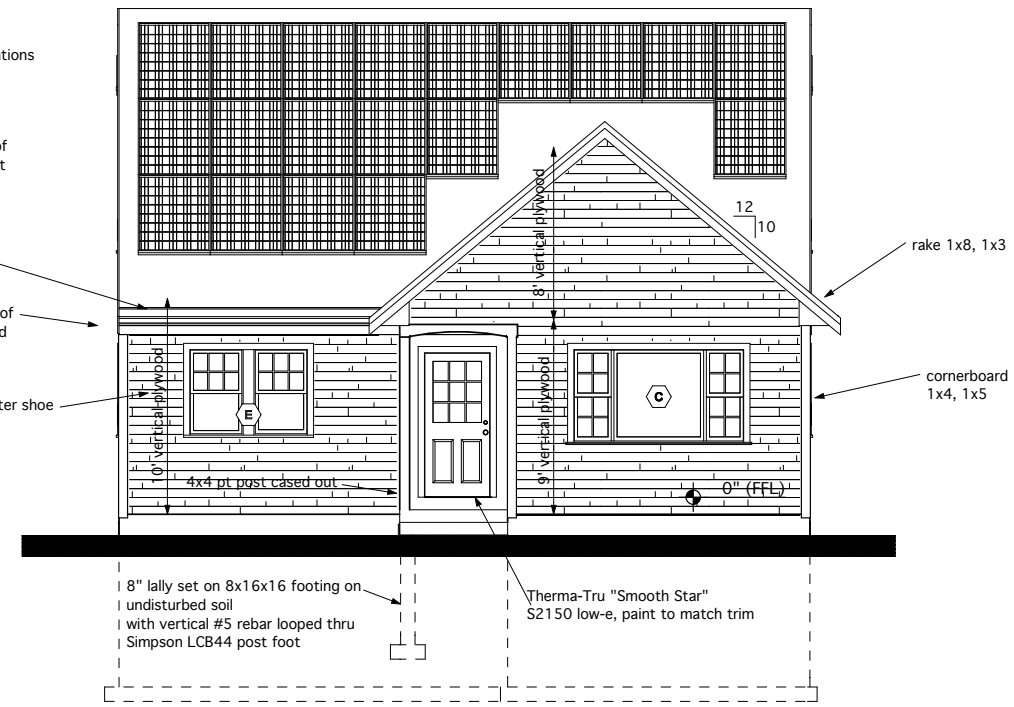
verify door and window sizes with plans, verify quantities and finishes before ordering
install following manufacturer's recommendations unless noted otherwise
exterior door and window color: white



3 Right Elevation
SCALE: 1/4" = 1'-0"

Solar Panels NIC
19 @ 245W for 4.6kW
leave south facing roof free of all penetrations to accommodate future solar panels
future solar panels shown not in contract
Prewire: install 3/4" EMT thru roof terminate in junction box mounted on roof Location 2' below ridge and 4' in from left edge of roof

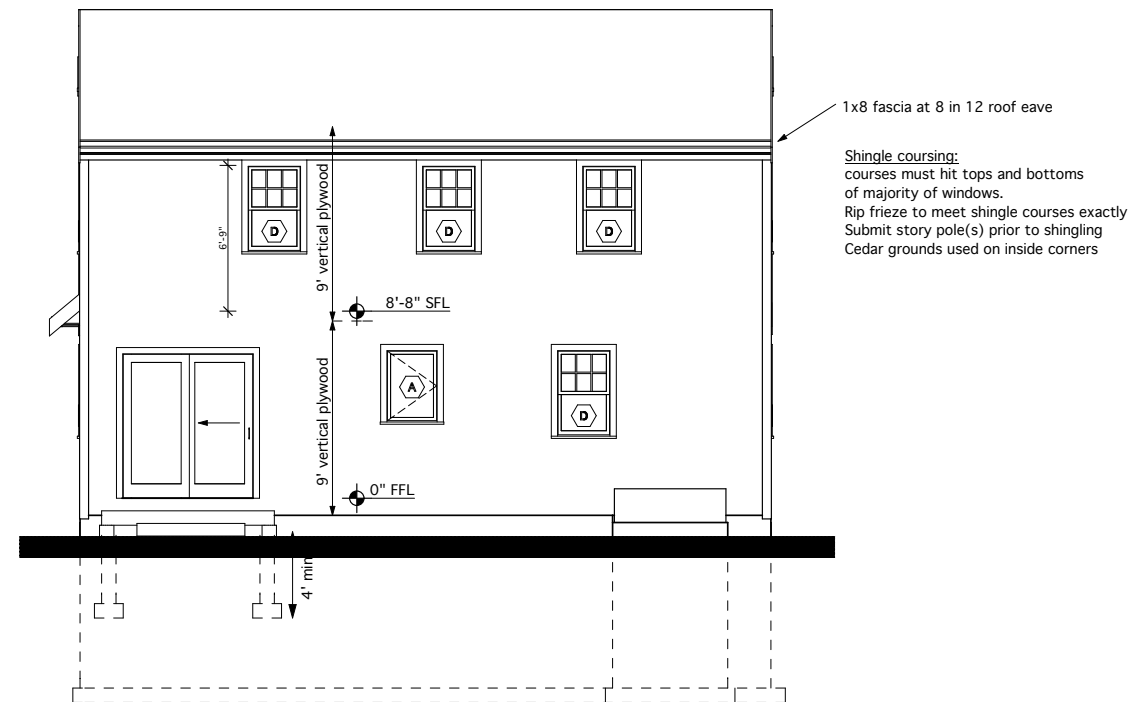
1x10 fascia at 10 in 12 roof eave
aluminum gutter install so gutter is at or below plane of roof end of gutter should be entirely concealed by rake board
10' vertical plywood this section runs from bottom of mudsill to top of rafter shoe
construct story pole for owner approval before commencing shingling
install windows and doors with 30lb tar felt splines



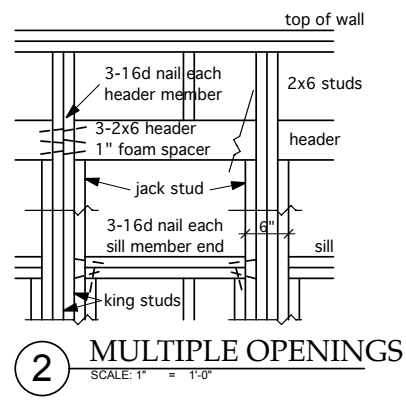
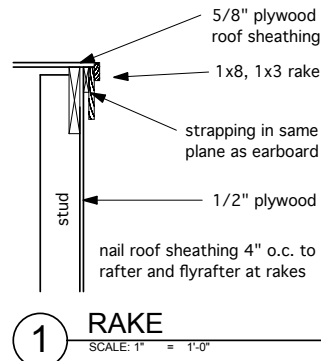
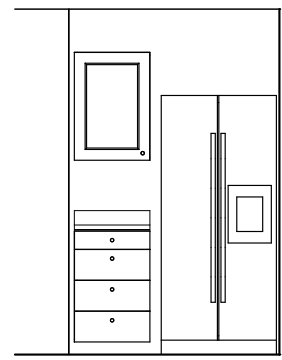
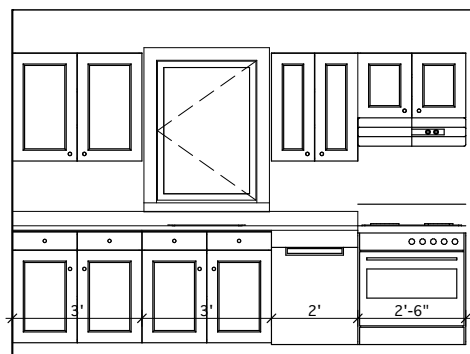
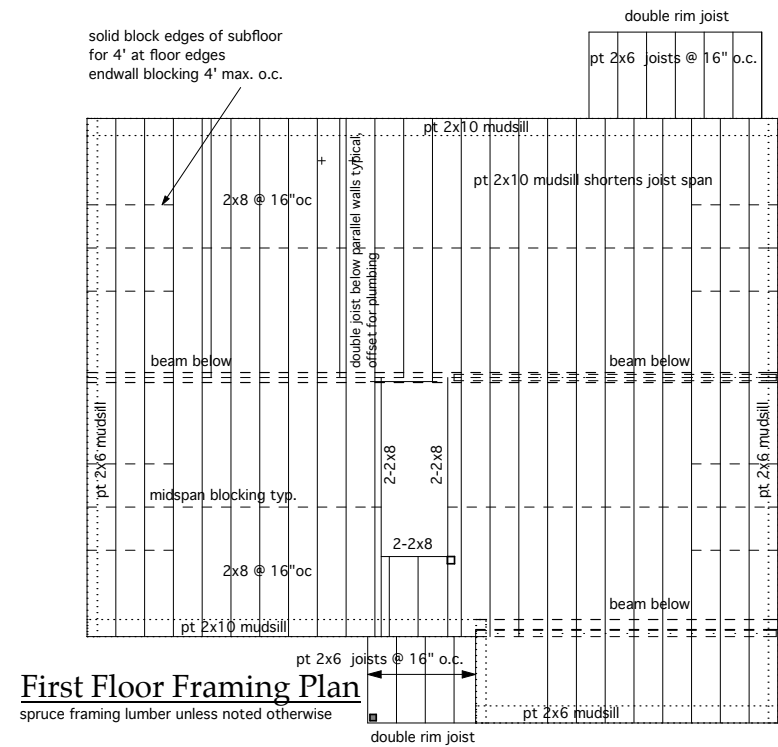
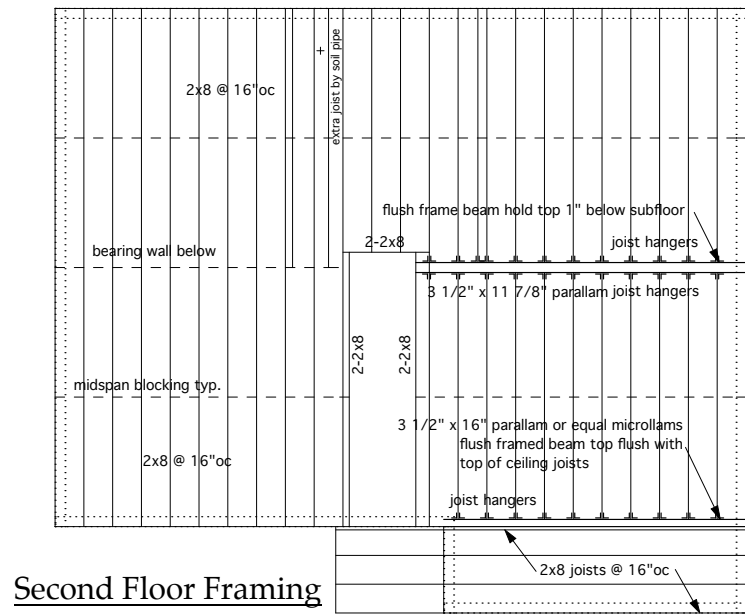
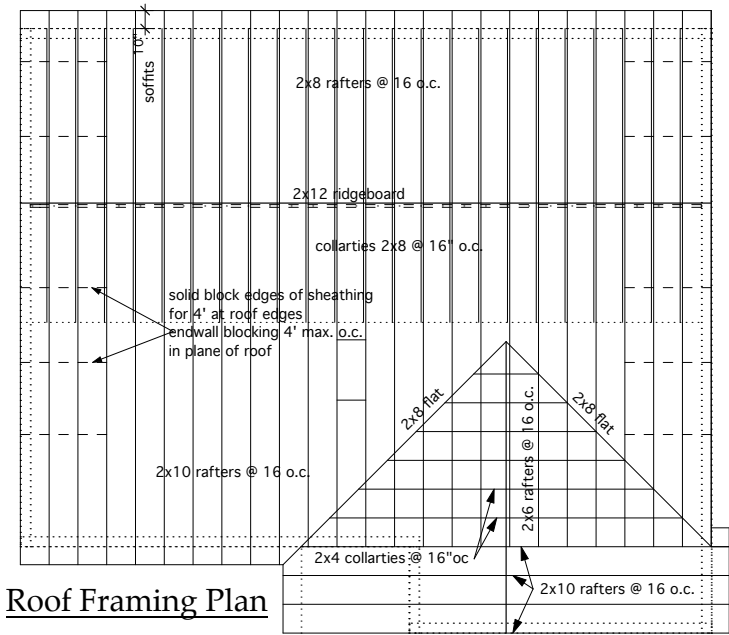
2 South (Front) Elevation
SCALE: 1/4" = 1'-0"

Door Schedule							
Qty	ID	Manufacturer	Serial Number	Rough Opening	Width	Height	Notes / Remarks
1	1	Therma-Tru	S210	3-2 1/2 x 6-10 1/2	3'	6'-8"	
1	2	Andersen 200	PS61611	6-0 3/4 x 6-11	6'	6'-8"	slider
1	5				1'-3"	6'-8"	interior door, MDF molded typical
1	5				1'-6"	6'-8"	interior door, MDF molded typical
1	5				2'	6'-8"	interior door, MDF molded typical
9	5				2'-6"	6'-8"	interior door, MDF molded typical
1	6				2'-6"	6'-6"	basement door, MDF molded typical
1	7				5'	6'-8"	interior door, MDF molded, bypassing

typical interior door: 6 panel MDF molded doors painted white



4 Back Elevation
SCALE: 1/4" = 1'-0"



Roof Construction Typical
2x8, 2x10 rafters
5/8" CDX plywood
8d nails @ 6" edges, 12" field
8d nails @ 6" @ perimeter 4' edge zone

IKO 25 year asphalt shingles on 15lb tar felt

5/8" CDX roof sheathing
aluminum drip edge on eaves and rakes

2x10 rafters @ 16" oc

2x8 collarties @ 16" oc
1x8 and 1x10 fascia
1x10 soffit
1x4, 1x5 cornerboards
1x6 frieze rip to meet window head
1x8, 1x3 rakes

1/2" drywall ceiling on strapping 16" oc over 6ml poly. vapor barrier typical

4x4 oak newel Coffman or equal (set newel prior to drywall finish)
oak handrail C-6005 P1
7/4 x 7/4 oak balusters
C-6006 filleted shoe rail set on sloped wall

pt 2x10 sill sill sealer
dampproof below grade
separate all wood and pt wood from concrete with 15 lb felt
all footings on undisturbed soil

